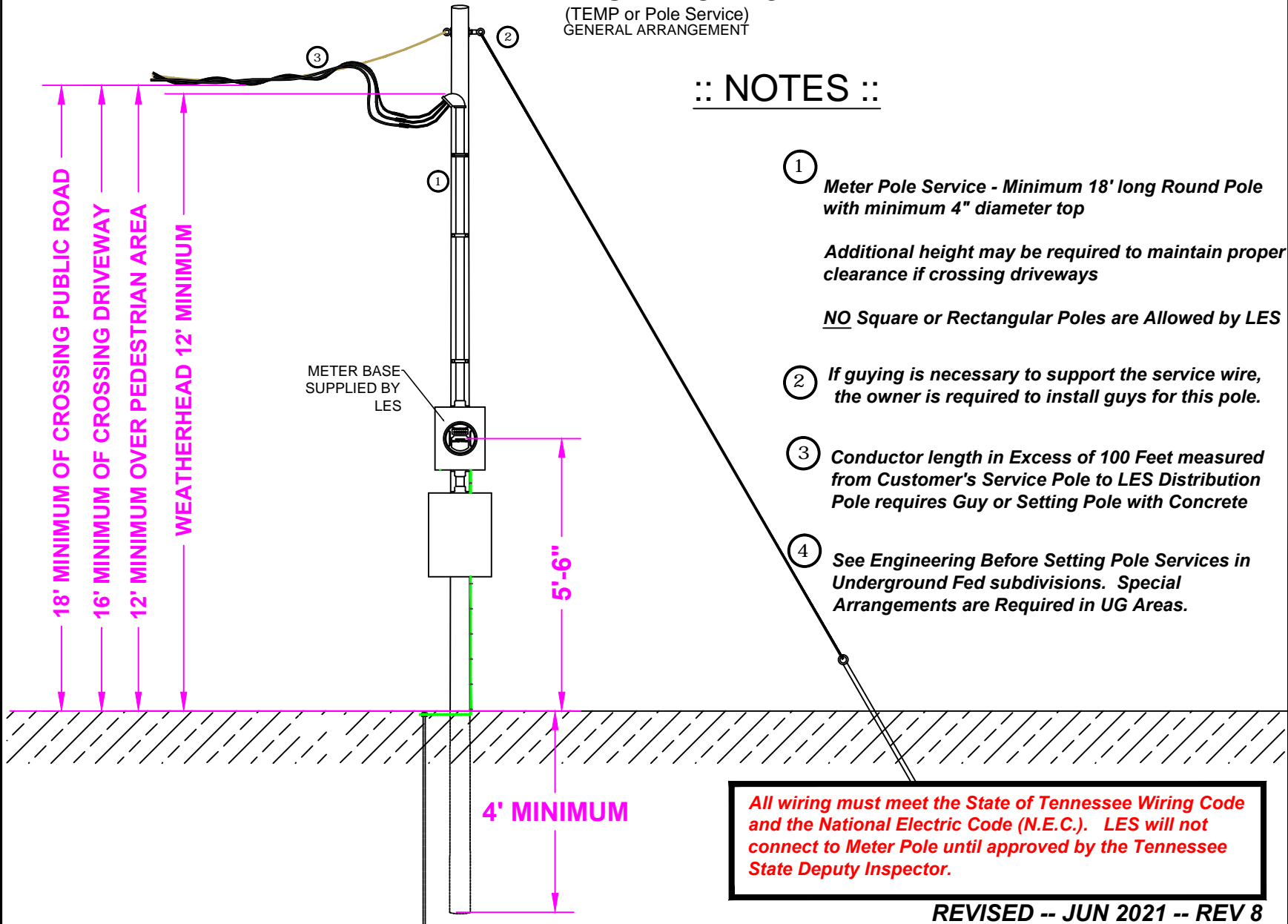


LEXINGTON ELECTRIC SYSTEM METER SERVICE POLE

(TEMP or Pole Service)
GENERAL ARRANGEMENT



:: NOTES ::

- ① Meter Pole Service - Minimum 18' long Round Pole with minimum 4" diameter top

Additional height may be required to maintain proper clearance if crossing driveways

NO Square or Rectangular Poles are Allowed by LES
- ② If guying is necessary to support the service wire, the owner is required to install guys for this pole.
- ③ Conductor length in Excess of 100 Feet measured from Customer's Service Pole to LES Distribution Pole requires Guy or Setting Pole with Concrete
- ④ See Engineering Before Setting Pole Services in Underground Fed subdivisions. Special Arrangements are Required in UG Areas.

All wiring must meet the State of Tennessee Wiring Code and the National Electric Code (N.E.C.). LES will not connect to Meter Pole until approved by the Tennessee State Deputy Inspector.